

OSDE

OSDE stands for Open Spaces for Dialogue and Enquiry. This educational initiative promotes a methodology for the introduction of global issues and perspectives in educational contexts, such as teacher, adult, higher and secondary education. OSDE has been developed and piloted by a group of educators and researchers in 8 countries and it is hosted by the Centre for the Study of Social and Global Justice at the University of Nottingham.

OSDE offers a methodology for structuring safe spaces for dialogue and enquiry where participants feel comfortable to express themselves and ask any question without feeling embarrassed or unintelligent. In order to create such spaces, the project proposes:

1. The discussion and adoption of **basic principles**
2. a **set of procedures** for structuring an enquiry
3. **facilitation guidelines** for creating an appropriate ethos for the relationships, exchanges and cognitive processes within the group.



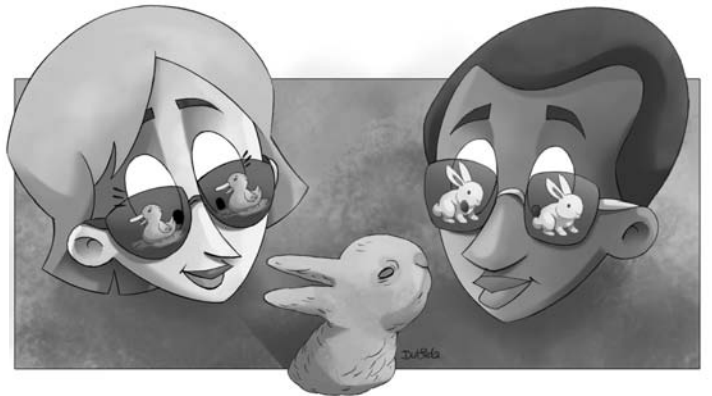
Proposed Principles

1. Every individual brings to the space valid and legitimate knowledge constructed in their own contexts

We look at the world through lenses constructed in a complex web in our contexts, influenced by several external forces (cultures, media, religions, education, upbringing), internal forces (personality, reactions, conflicts) and encounters and relationships. The image these lenses project represent our knowledge of ourselves and of the world and, therefore, whether they are close or far from what is considered 'normal', they have a history and their validity needs to be acknowledged within the space

2. All knowledge is partial and incomplete

As our lenses are constructed in specific contexts, we lack the knowledge constructed in other contexts, and, therefore, we need to listen to different perspectives in order to see/imagine beyond the boundaries of our own lenses



3. All knowledge can be questioned

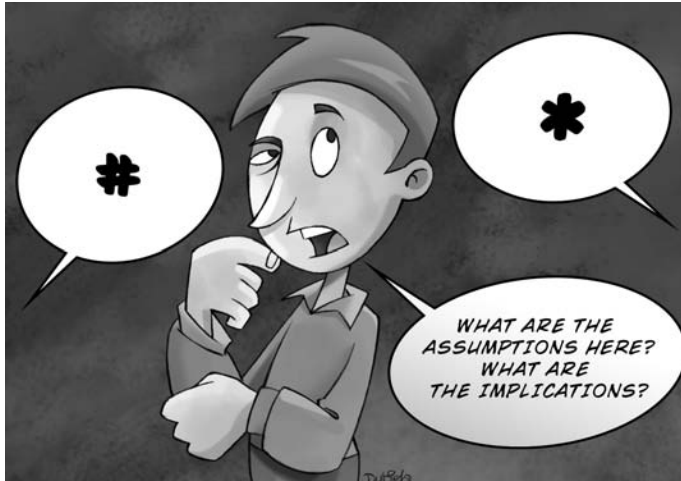
Critical engagement in the project is defined as the attempt to understand where perspectives are coming from and where they are leading to (origins and implications). Therefore, questioning is not an attempt to break the lenses (to destroy or de-legitimise perspectives), but to sharpen and broaden our vision.



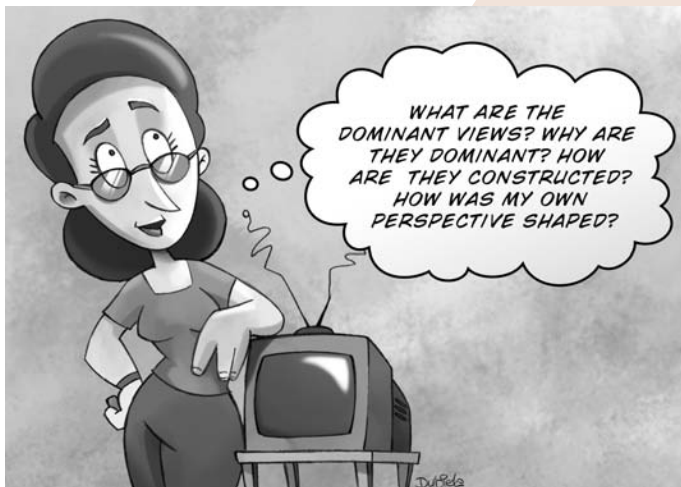
Procedures for Enquiry

It is important to signal when you open the space in order to create the right atmosphere for the enquiry process. You can do that by pointing back to the basic principles. Remember that a safe space is about experimenting with different/new ways of thinking and relating to one another.

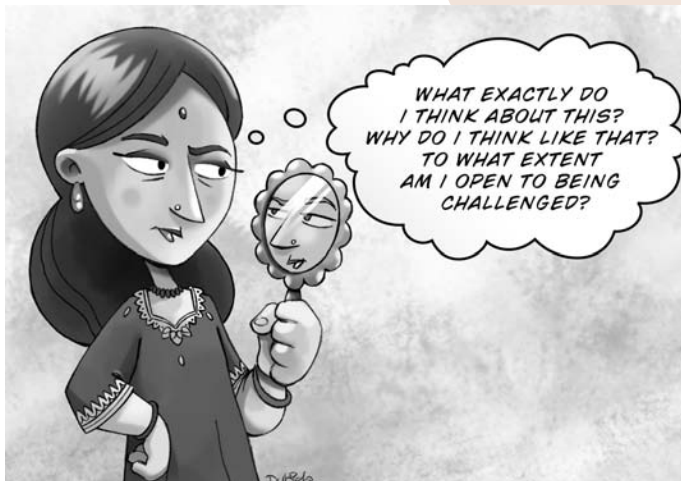
1. Critical engagement with different perspectives: what are the limitations/implications of each perspective presented?



2. Informed thinking: what are the dominant views? Why are they dominant? Where to find out more?



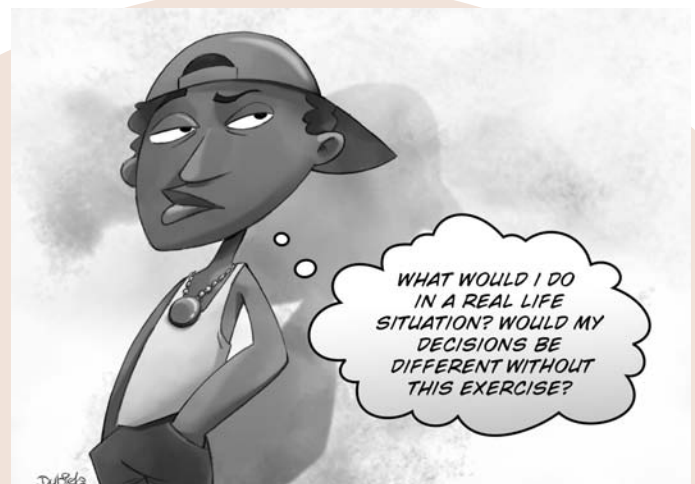
3. Reflexive questions: what do I think about this and why?



4. Group Dialogue questions: what are the key tensions? What do other people think?



5. Responsible choices: what does it have to do with me?



6. Debriefing: what have I learned?



For facilitation guidelines visit

www.osdemethodology.org.uk/facilitation.html